

I.P. (P.G.) College Campus -2, Bulandshahr

Report on Student Feedback Survey

Academic Session 2022-23

The students are an integral part of any academic institution. It becomes imperative for any institution to reiterate that, it is achieving its set goals and therefore it becomes necessary to elicit perceptions and opinions of the students who are the foremost stakeholders and identify the deviations if any, to improve the system. Hence a Feedback Survey was conducted and reported by Feedback Committee under Internal Quality Assessment Cell (IQAC).

In order to capture the experiences of students for the academic session 2022-23, a questionnaire of 17 parameters was circulated. The feedback was taken on different attributes like; Infrastructure Facilities, Maintenance and Cleanliness, Classroom Teaching, Co-curricular and Extra-curricular activities, Food and water, Library Services, etc.

Objective of student's feedback are

1. To find out the various shortfalls in terms of physical /infrastructure facilities provided to the students by the college.
2. To find out any short comings in the academic environment which includes – course, curriculum, examination system, teaching learning process, etc.
3. To rectify all the short comings, that get reflected through the feedbacks after proper analysis, as soon as possible.

Likewise, every year, this year also at the end of the session online feedback forms were sent to the students through Google classroom. The Link of the form was <https://forms.gle/4bxJV3KFSjwidkVt7> . This circulation, distribution of feedback forms and collection of filled feedback forms (online) was done by the feedback committee with the coordination of IQAC members.

The questionnaire measures the responses scaled as **Excellent, Very Good, Good, Average, Below Average**. The responses obtained on these dimensions are compiled into a spreadsheet, analysed and logical conclusions are drawn there from.

The Table 1 demonstrates the responses observed on the given scale as against the respective parameters. As a higher (or lower) proportion of students respond as (**Excellent to Below Average**), that indicates an outcome in favour of (or against) College attaining (or deviating from) its goal.

Table- 1, Students Feedback Index Table

S. No.	Parameter	Total Responses	Percentages % of total Responses					Total % of (Excellent +Very Good+ Good) Responses	Level of Satisfaction
			Excellent	Very Good	Good	Average	Below Average		
1	Syllabus is Relevant to the Course	613	39%	31%	23%	5%	2%	93%	Satisfactory
2	Syllabus Coverage by Faculty Members	613	40%	28%	23%	6%	3%	91%	Satisfactory
3	Effectiveness of Classroom Teaching	613	46%	26%	20%	6%	2%	92%	Satisfactory
4	Interaction of Teachers	613	45%	27%	21%	4%	3%	93%	Satisfactory
5	Response of Your Queries in Class	613	44%	28%	19%	6%	3%	91%	Satisfactory
6	Quality of Study Material In Classes	613	45%	26%	20%	7%	3%	91%	Satisfactory
7	Information Given on Google Classroom	613	56%	23%	15%	3%	3%	94%	Satisfactory
8	Fairness of Internal Evaluation Process	613	41%	30%	21%	5%	3%	92%	Satisfactory

9	Availability of Books from the Library	613	44%	28%	19%	5%	4%	91%	Satisfactory
10	Standard of Books from The Library	613	42%	26%	21%	6%	5%	89%	Satisfactory
11	Dealing of The Library Staff	613	33%	25%	23%	13%	6%	81%	Moderate Satisfactory
12	Dealing of The Office Staff	613	33%	28%	22%	10%	7%	83%	Moderate Satisfactory
13	College Infrastructure	613	50%	27%	17%	4%	2%	94%	Satisfactory
14	Campus Atmosphere	613	46%	26%	21%	5%	2%	93%	Satisfactory
15	Co-curricular Activities	613	26%	28%	22%	15%	9%	76%	Moderate Satisfactory
16	Games & Sports Facilities	613	23%	25%	23%	17%	12%	71%	Moderate Satisfactory
17	Overall Academic Experience in Current Session	613	43%	29%	18%	8%	2%	90%	Satisfactory

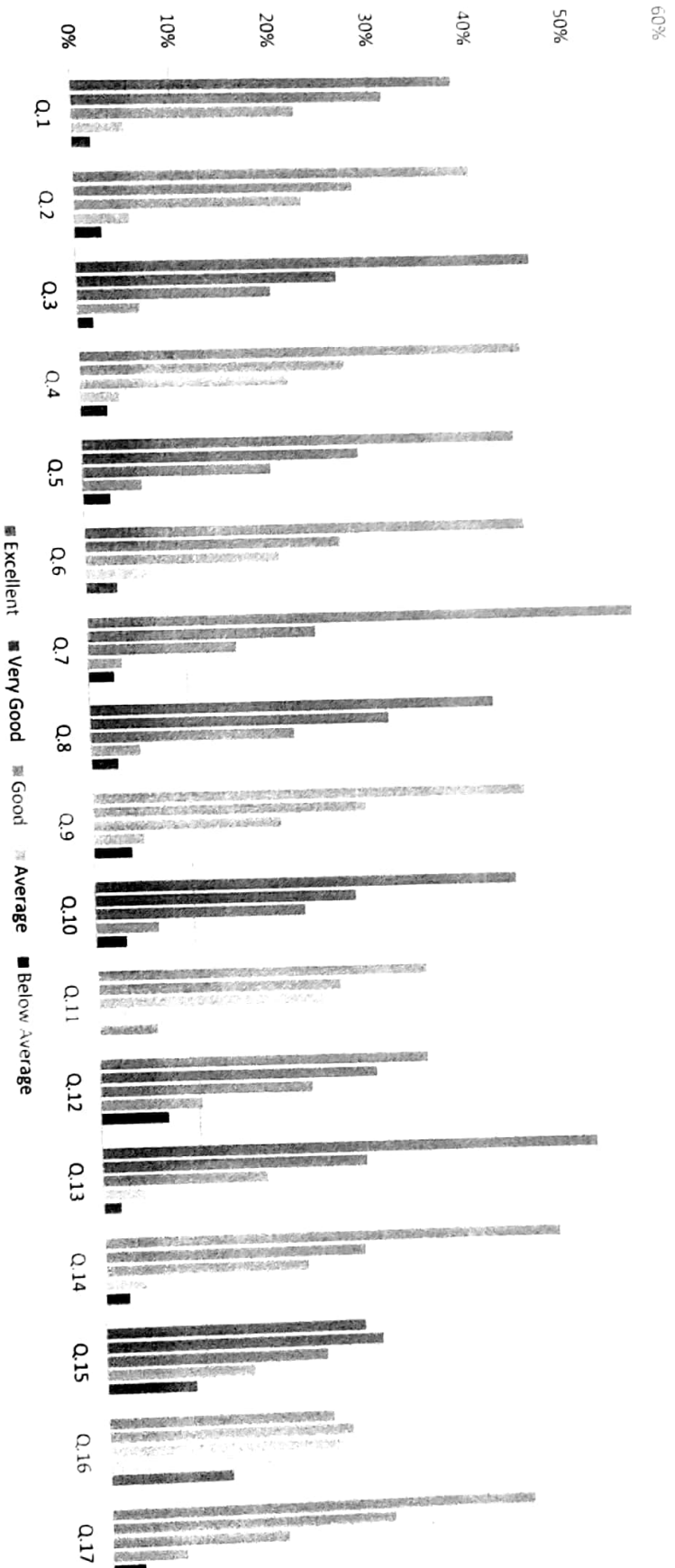
I.P.(P.G.) College Campus -2, Bulandshahr

Chart Representation of the Student's Feedback

Academic Session 2022-23

No. of Respondents- 613

Student's Feedback



Criteria for Level of Satisfaction

The level of satisfaction has been calculated as per the following criteria:

- If the Level of Satisfaction in **% of (Excellent + Very Good + Good) is or above 85%**, then it is considered as **Satisfactory**.
- If the Level of Satisfaction in **% of (Excellent + Very Good + Good) is between 60% and below 85%**, then it is considered as **Moderate Satisfactory**.
- If the Level of Satisfaction **% of (Excellent + Very Good + Good) is below 60%**, then it is considered as **Less Satisfactory**

Summary of the Feedback Received from Students (2022-23)

Total Respondents- 613

Respondents in Department of Commerce & Business Administration - 120

Respondents in Department of Computer Science - 269

Respondent in Department of Science - 168

Respondent in Department of Teacher's Education - 56

Summary of Findings

Feedback Analysis


An analysis of the Student Feedback collected by the Feedback Committee under IQAC to assess the performance of the institutions under various parameters for the session 2022-23 observed:

1. The students show their satisfaction over the regularity with which classes are conducted.
2. The students are satisfied with the technical and soft skill training provided during the program.
3. The students are satisfied with the regular and fair examination system.
4. The campus atmosphere is regarded as pleasant and disciplined by most of the students.
5. Mostly all the students give a positive feedback for Infrastructure and cleanliness in the campus.

Recommendations

1. Institute needs to upgrade laboratory instruments and also add some new instruments and test kits in laboratory.
2. More usage of ICT tools should be ensured in the offline environment.
3. Institute need to upgrade textbooks and add some more reference books and also a particular time period should be allotted to students for library.

4. Sports facilities should be improved and a particular time for sports should be allotted in a week to students.
5. Committee suggested that the core courses can be aligned with the requirements of competitive examinations.
6. Guest Lectures, Workshops, Career Awareness Program, Personality Development Classes, Industrial visits, Geographical gardens visit, etc. should be organized more.
7. More student counselling sessions, internships and placements should be provided regarding Job Opportunities.
8. Entertainment Program and Recreational Facilities within a session must be conducted.
9. The canteen facility inside the campus needs improvement.


Principal
J.P. (P.G.) College, Campus-2
Bulandshahr (U.P.)